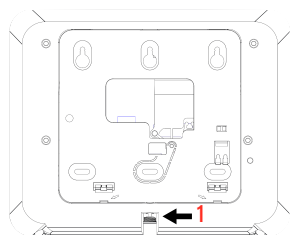
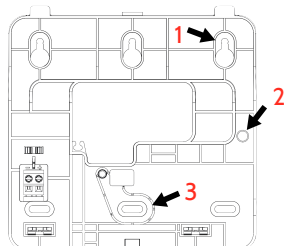


1 WALL MOUNT



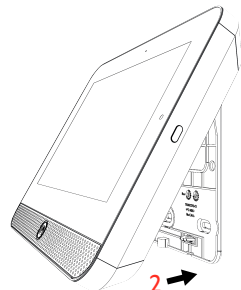
1. With a small phillips screwdriver, undo the locking screw from the back of the panel, remove the SmartMount backplate.



1. Mount the backplate to the wall using #6 flat head screws and appropriate wall anchors if needed, ensuring it is level.

2. If using the model with the legacy security radio, in the provided hole on the right hand side of the backplate drill a 1/4" hole in the wall and feed the white RF antenna into the wall.

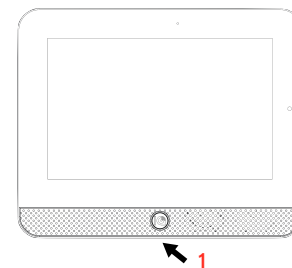
3. A screw is required in break-away wall tamper for UL 2610 and EN Grade 2 installations.



Connect the power supply to the barrel jack on the back of the panel.

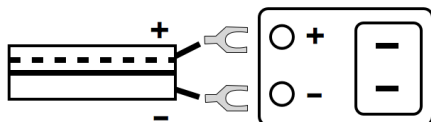
1. Latch the top of the IQ5 Hub onto the SmartMount backplate.

2. Swing the panel down towards the backplate and press firmly against the wall.



1. With a small phillips screwdriver, screw in the locking screw from the bottom of the panel to secure it to the wall.

2



Connect power supply
WARNING! Use 12vDC Power Supply ONLY

3



Press and hold the power button on the right side of the panel for 3 seconds to power up

4



CREATE ACCOUNT

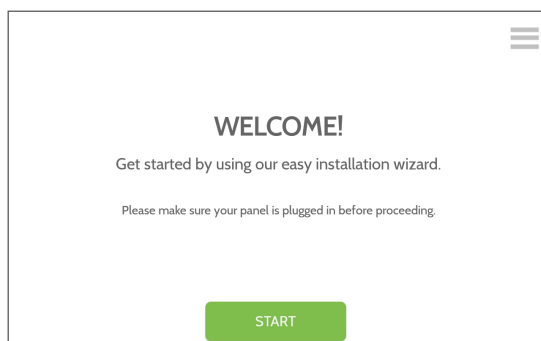


TRY THE MOBILE TECH APP

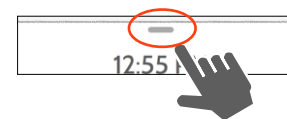
5 ON SCREEN SETUP WIZARD (Auto Launch)

Once the panel powers up the on-screen wizard will automatically appear.

Follow the prompts to complete your installation.



SETUP WIZARD (Manual Launch)



Tap to access settings tray



Settings



Advanced
(default installer password is 1111)



Setup Wizard
(Launch Wizard)